

Rollei



 Made in Germany

Rolleiflex 6000-System

Lenses and Dedicated Accessories

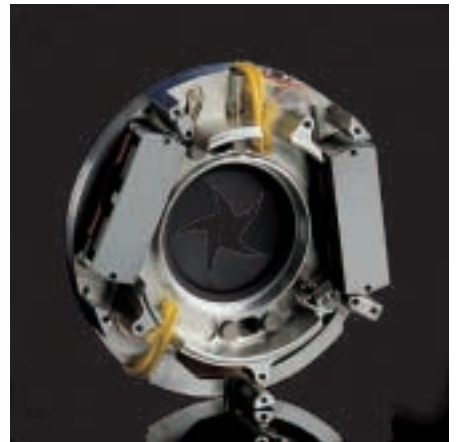
Top-notch Lenses

Only the best lenses are good enough for a professional camera system.

For your Rolleiflex 6001 Professional, 6008 AF and Rolleiflex 6008 Integral you may choose between lenses from 30 to 1000 mm focal length – from fisheye to ultra-wide-angle, wide-angle and standard lenses to telephoto, supertelephoto, zoom and several special-purposes lenses. All of them cutting-edge products made by Carl Zeiss and Schneider-Kreuznach, the world-famous specialists for medium-format optics. All of them with Rollei HFT coating (High Fidelity Transfer) for optimum flare suppression and brilliant colors.

Our PQ (Professional Quality) and PQS lenses, the latter with a top shutter speed of 1/1000 s, are the result of advanced optical design techniques, innovative technology and permanent optimization. All of them use the unique Rollei Direct-Drive technology: The diaphragm and shutter blades in the lens are driven by two linear motors and very precisely controlled and monitored in 1/3 increments by the camera's micro-computer. Control pulses and power are transmitted from the camera to the lens via ten gold-plated contacts – without friction, free from wear and with high speed. As soon as the lens is in place on the camera, all important information is immediately transferred to the camera. In other words, you are instantly ready to shoot.

PQ and PQS lenses by Rollei, Carl Zeiss and Schneider-Kreuznach are in a class of their own. They are the ideal combination of between-the-lens and focal-plane shutter technology, offering both wide apertures and fast top shutter speeds that are fully synchronized. Their outstanding features are optimum sharpness, color rendition and brilliance as well as reliability and high operating speed.



Photos on the frontpage:
Prof. Heinrich Treude (Architecture)
Dirk Bethge (Landscape)

AGFA Profi-Workshop pk 02
Gerhard Vormwald (Portrait)
Florian Adler (Close up)



Glass

A combination of proper lens curvatures and suitable glass types are your guarantee that the Rollei line of lenses are optimally corrected for aberrations for sharp and brilliant pictures. Carl Zeiss, Schneider-Kreuznach and Rollei use advanced glass types, some of which with particularly high refractive indices.

Mechanics

A lens consists of several elements, some of which may be combined in components. These are axially shifted for focusing and zooming, sometimes even in opposite directions. All these motions have to be very precise in order not to degrade the high performance of the lenses over their entire focusing and zooming ranges. Precise manufacturing techniques and high-quality materials make sure that the tight tolerances are met even after many years of use.

Anti-reflection coating

Lenses for Rollei cameras are HFT coated (High Fidelity Transfer). The coating consists of special ultra-thin films evaporated on the lens surfaces. The result is a noticeable reduction in the amount of light reflected from the lens elements and thus less contrast-degrading flare. Also, light transmission is increased, allowing full use to be made of lens speed.

Centration

As a user of a Series 6000 Rolleiflex SLR, you have a right to expect edge-to-edge sharpness in your pictures. Reason enough for the manufacturers of these lenses to place special emphasis on the exact centration of their optical components.

Flare reduction

In addition to anti-reflection coating, additional care is taken to minimize flare. Special black varnish blocks out light that might be reflected into the optical path, and a separate pin-hole diaphragm cuts off any and all light rays that are not required for image formation. (This pin-hole diaphragm should not be confused with the iris diaphragm that is needed for exposure and depth-of-field control.)

Neutral colors

Due to different glass types used for the different lens elements, lenses may exhibit subtle differences in color rendition. The design of dedicated Rollei lenses therefore places special emphasis on reducing these color variations to an absolute minimum. In practical terms this means that pictures taken of one and the same subject with different lenses will have identical color characteristics and can thus be combined without any problem.

Sharpness

This is the product of the resolving power and contrast rendition of a lens – criteria that are given great importance in the design of Rollei camera lenses. Precise focusing is easy due to the bright focusing screens of Rolleiflex 6000 Series cameras (and the fast and precise autofocus of the Rolleiflex 6008 AF) and makes sure that your pictures are tack-sharp.

Lens speed

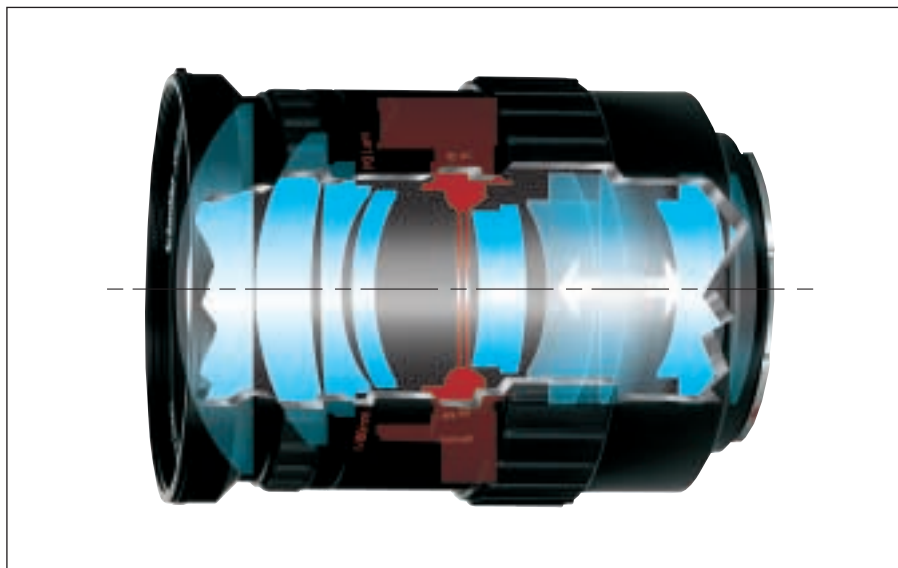
Lens speed, or the aperture ratio, is an important criterion for choosing lenses. The higher the speed of your lenses, the longer will you be able to shoot without a tripod or flash unit and the easier the use of selective focus for creative composition. High lens speed and high performance, however, are difficult to reconcile. Still, the high standards employed in the design and production of Rollei lenses are your guarantee that even at full aperture your pictures will be brilliant and sharp from edge to edge.

Precise aperture control

The aperture, on the one hand, controls the amount of light reaching the film, on the other the depth of field in your pictures. At wide apertures, depth of field is shallow. Only the plane you have focused on will appear sharp, the fore and background being blurred. Owing to the almost circular shape of the lens aperture in Rollei lenses, the transition from sharp to blurred is very smooth and pleasing, while reflections in the blurred portions of the subject appear round and natural.

PQ and PQS AF Lenses

Specially designed for Rolleiflex 6008 AF cameras, there is a line of pioneering autofocus lenses. These latest lenses by Schneider-Kreuznach provide a degree of focusing comfort that makes full use of the high speed of the 6008 AF. Thanks to fast and precise focusing, you can concentrate fully on your subject. On a Rolleiflex 6008 Integral, 6003 Professional or 6001 Professional, these AF lenses may be used with manual focusing.



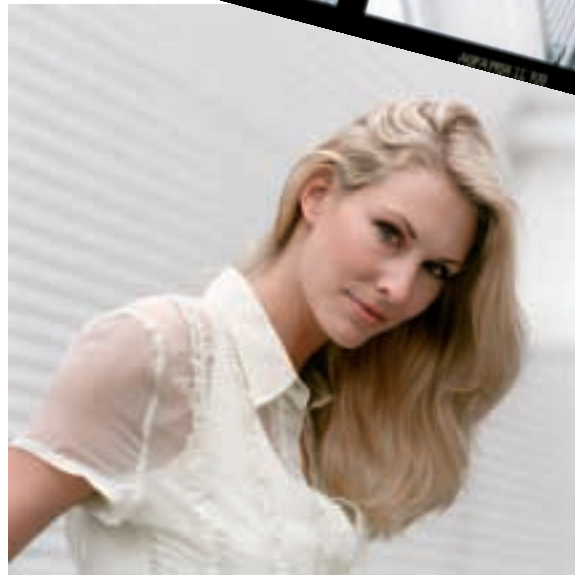
Schneider AF-Super-Angulon 50 mm f/2.8 HFT PQS*
With its high speed of f/2.8, this high-performance wide-angle lens offers a very bright viewfinder image. It is particularly versatile for indoor photography with available light.



Schneider AF-Xenotar 80 mm f/2.8 HFT PQS
The classical standard focal length for fast general-purpose AF shooting in almost all areas of photography. Its legendary sharpness is complemented by a super-fast 1/1000 s for fast-moving subjects or when using high-speed film.
Cat. No. 54 001



Schneider AF-Makro-Symmar 100 mm f/3.5 HFT PQS*
A new macro lens with outstanding performance in close-up and copy work.
Thanks to its long helical mount, the Makro-Symmar can be focused from infinity to a reproduction ratio of 1:2 without adding extension tubes. Although designed for close-up work, the lens may also be used as a short telephoto for portraiture and beauty shots.



Photos: Jens Kollmorgen



Schneider AF-Tele-Xenar 180 mm f/2.8 HFT PQ
High-speed and high-performance telephoto lens particularly well-suited for portraiture, sports and fashion photography. Its wide initial aperture is ideal for selective focusing, available-light and action photography requiring fast shutter speeds.

Cat. No. 54 701



Schneider AF-Variogon 60-140 mm f/4.6 HFT PQS
A top-notch zoom lens of outstanding performance equivalent to very good lenses of fixed focal length. The two-ring zoom is a genuine general-purpose lens offering focal lengths from moderate wide-angle right up to medium telephoto. The ideal solution when your choice of camera stations is limited.

Cat. No. 54 501



Schneider AF-Longar 1.4x HFT
High-quality teleconverter extending the focal length of Rollei AF lenses 1.4x. Aperture values change by only one f-stop. The AF-Tele-Xenar 180 mm f/2.8 thus becomes a high-speed 250 mm f/4. No change in minimum focusing distance!

Cat. No. 56 701

EL-Lenses

An alternative line of lenses for the Rolleiflex 6000 System, including the Distagon 50 mm f/4 HFT, Planar 80 mm f/2.8 HFT, Sonnar 150 mm f/4 HFT and Sonnar 250 mm f/5.6 HFT. Instead of a filter bayonet mount, EL lenses have an M67 screw thread for the use of

filters and close-up lenses. Lens hoods are attached via the size VI outside bayonet.

The Tele-Tessar 500 mm f/8 HFT also is an EL lens.



Rollei Distagon 50 mm f/4 HFT EL

A versatile wide-angle lens that is very popular as a standard wide-angle for architectural, indoor and landscape photography.

Cat. No. 86 706



Rollei Planar 80 mm f/2.8 HFT EL

The general-purpose standard focal length. A wide aperture allows pin-point focusing.

Cat. No. 86 675



Rollei Sonnar 150 mm f/4 HFT EL

A versatile telephoto lens with many uses in creative photography. Highly recommended for portraiture and close-ups.

Cat. No. 86 757



Rollei Sonnar 250 mm f/5.6 HFT EL

General-purpose long-focus lens whose compact design makes it particularly well-suited for portraiture, wild-life and sports photography.

Cat. No. 86 760



Tele-Tessar 500 mm f/8 HFT EL

Cutting-edge supertelephoto lens producing noticeable perspective foreshortening. Its reproduction ratio is six times greater than that of the standard focal length. Invaluable for wild-life and scientific photographers as well as expeditions, but also for applications where perspective compression is used creatively. The internally focusing lens has a telescopic lens hood and a tripod socket.

Cat. No. 86 761

PQ Wide-angle Lenses



Zeiss F-Distagon 30 mm f/3.5 HFT PQ

A fisheye ultra-wide-angle lens of high speed and outstanding performance. The full-frame 6x6 fisheye excels by excellent illumination of the field even at full aperture. Typical fisheye distortion of off-center subject detail. For creative photography, advertising, interior decoration, astronomical, geophysical and meteorological work, among others.

Cat. No. 64 866



Super-Angulon 40 mm f/3.5 HFT PQ

An ultra-wide-angle lens whose speed and compactness are unprecedented in this type of lens. Floating elements keep its outstanding performance constant right up to a subject distance of 0.4 m.

Cat. No. 59 439



Zeiss Distagon 50 mm f/4 FLE HFT PQ

The advanced optical design of this standard wide-angle is further enhanced by floating elements. Outstanding performance right up to close-up. Unusually uniform illumination of the field makes it ideal for scenery with critical blue sky.

Cat. No. 86 705



Photo: Prof. Heinrich Treude



Zeiss Distagon 60 mm HFT PQ

Versatile and compact moderate wide-angle lens. A genuine alternative to the 80mm standard focal length, since the moderate wide-angle coverage captures a wide field without creating a typical wide-angle perspective.

Its short minimum focusing distance and extended depth of field allow fast and precise focusing, above all in action photography.

Cat. No. 86 725

PQS Lenses With Super-fast Between-the-Lens Shutters

If Rollei shutter technology allows 1/500 s at oversize shutter openings, it is only logical that even faster speeds have become feasible with normal sizes. And in fact, Rollei has been able to overcome the technical limit of 1/500 s. Several focal lengths have meanwhile been fitted with the new Direct Drive Shutter that permits speeds up to 1/1000 s. These special shutter versions are designated PQS.

AGFA  Profi-Workshop pk 02



Photo: Florian Adler

Lens: Schneider Apo-Symmar 90 mm f/4 HFT PQS

AGFA  Profi-Workshop pk 02



Photo: Urs Recher

Lens: Schneider Apo-Symmar 90 mm f/4 HFT PQS



Zeiss Planar 80 mm f/2.8 HFT PQS

Classical standard lens for general use in practically all areas of photography. High speed and legendary sharpness – plus an ultra-fast 1/1000 second for moving subjects or as a safety margin when using high-speed film.

Cat. No. 64 002



Schneider Apo-Symmar 90 mm f/4 HFT PQS

Versatile macro lens with apochromatic correction. Optimized for close-up photography. Long helical mount for focusing from infinity up to a reproduction ratio of 1:2 without additional accessories. Short minimum focusing distance is ideal for copy work.

Cat. No. 63 348



Zeiss Makro-Planar 120 mm HFT PQS f/4

The ideal high-performance lens for copy work and high magnifications. Optimized for a reproduction ratio of 1:8, it may also be used (with a bellows unit) for an extended range of 1:5 to about 2:1. Particularly well-suited for product photos and close ups.

Cat. No. 66 300



Zeiss Sonnar 150 mm HFT PQS f/4

A short telephoto that is well-suited for many creative uses, above all in portraiture, but also for full-frame shots from a longer distance. Its top shutter speed of 1/1000 s makes this standard telephoto a favorite for rapid flash shots.

Cat. No. 59 602

PQS Lenses With Super-fast Between-the-Lens Shutters



Photos: Manfred Zimmermann



Zeiss Sonnar 250 mm f/5.6 HFT PQS

Classical, easy-to-use telephoto lens of compact design. Particularly well-suited for "close-ups" from a certain distance as well as wild-life and sports photography. Ideal for perfectly lit flash shots and well-balanced fill-in in studio and stage work.

Cat. No. 62 624



Zeiss Tele-Tessar 350 mm f/5.6 HFT PQS

Its relatively high speed and compact design, which allow even hand-held use, make this lens a favorite among the long focal lengths. Its approx. 4.4x magnification over the standard lens results in a noticeable compression of perspective. A screw-on lens hood comes with the lens.

Cat. No. 65 631

Ultra-fast PQ/PQS Lenses by Zeiss and Schneider



Schneider Super-Angulon 50 mm f/2.8 HFT PQS

The maximum aperture of f/2.8 is extremely fast for this type of lens. It ensures both a very bright viewfinder image and high focusing accuracy. Especially well-suited for indoor photography. A floating element guarantees consistently high image quality right down to close-ups.

Cat. No. 63 346



Schneider Xenotar 80 mm f/2 HFT PQ

When it comes to wide initial aperture and outstanding optical performance, this lens is entirely in a class of its own. Its wide f/2 aperture not only gives you double the amount of light, but also offers a considerably brighter viewfinder image and higher focusing accuracy. A lens of superb optical and mechanical performance. The 1.4x Longar converter turns the lens into a 112mm f/2.8 system.

Cat. No. 87 612

High lens speed is particularly valuable in reflex photography. Apart from its optical benefits, there is higher focusing accuracy due to a brighter viewfinder image and shallower depth of field. The selective use of shallow depth of field and fast shutter speeds is particularly attractive to the creative photographer. However, these ultra-fast lenses are not only pioneering optical designs. No less impressive is the fact that these wide apertures have been combined with a between-the-lens shutter with speeds of up to 1/500 second, in the case of the Super-Angulon even to 1/1000 second. To solve this problem, the shutter blades are not made of conventional steel, but of a carbon-fiber laminate that reduces their mass to 60%. Another advantage of this super-thin multilayer material is its excellent sliding characteristics. One final factor is that the efficiency of the linear motors used has been increased through the use of neodymium magnets.



Zeiss Planar 110 mm f/2 HFT PQ

High-speed lens for portraiture and news photography. Its wide aperture is particularly useful, for example, for precise focusing in portraiture and fashion work. Minimum distortion and high image quality even at maximum aperture and close up are the strong points of this lens.

Cat. No. 86 674



Schneider Tele-Xenar 180 mm f/2.8 HFT PQ

An extremely attractive telephoto lens whose wide aperture and high performance guarantee outstanding results, above all in areas like portraiture, sports and fashion. The wide aperture not only results in very shallow depth of field, but also allows better use to be made of available lighting or faster shutter speeds to be used in action photography. A top-notch lens that becomes a 250 mm f/4 telephoto when used with the matched 1.4x Longar converter.

Cat. No. 87 606



Schneider Apo-Tele-Xenar 300 mm f/4 HFT PQ

Its high speed and apochromatic correction make this an extraordinary lens that sets new standards in its class. Used with a 1.4x Longar teleconverter, the lens becomes a 420mm supertelephoto with a maximum effective aperture of f/5.6.

Cat. No. 59 426



Schneider Apo-Symmar 150mm f/4.6 Macro HFT PQ
This apochromatically corrected macro lens is in a class of its own. Being a bellows head, it needs a basic extension of 67 mm for infinity focusing. This back focal distance can be attained either with a 67mm extension tube or the bellows unit that will then allow continuous focusing right up to 1:1 scale. The helical focusing mount with an extension of 9 mm is primarily intended for precise positioning, but to a certain extent also allows the use of extension tubes. The outstanding sharpness (apochromatic correction) can be further enhanced by using only the center of the large image circle typical of this lens design. These qualities and its practically complete freedom from distortion make the Apo-Symmar ideally suited for product shots and copy work.

Cat. No. 98 531

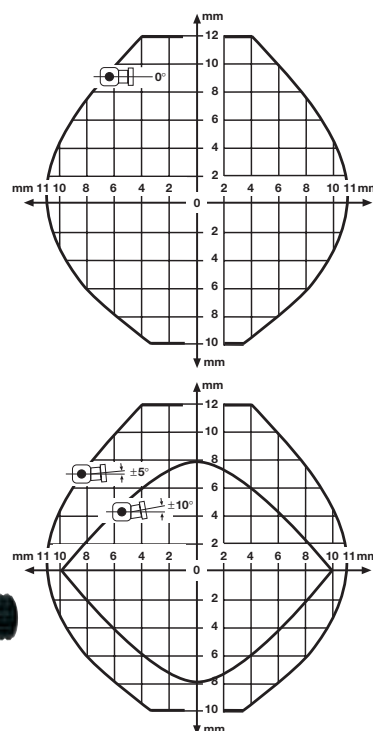


Schneider PCS Super-Angulon 55 mm f/4.5 HFT PQ

A special-purpose wide-angle lens with an oversize 104mm image circle and sophisticated mount permitting parallel horizontal and vertical shifting to control perspective as well as tilting to shift the plane of focus according to the Scheimpflug rule. Floating elements automatically balance the optical performance of the lens over the entire focusing range down to 0.5 m. Electronic signal transmission retains all automatic functions of shutter and diaphragm.

The ideal lens for all kinds of product shots requiring perspective precision or sharpness criteria that are normally reserved for large-format photography. Without tilt and shift, the PCS Super-Angulon is a normal wide-angle lens covering an image circle of 70°, distinguished by very high brilliance and minimum wide-angle distortion.

Cat. No. 86 900



Schneider Variogon 140-280 mm f/5.6 HFT PQ

A zoom lens with macro setting, zooming without re-focusing and a minimum focusing distance of only 2.5 m. In the macro setting, close-ups are possible down to 75 cm from the front lens. The lens takes the place of several lenses of fixed focal length and is particularly versatile due to its macro setting. Often enough it is the only solution to filling the frame from a given camera station. Its optical performance is equivalent to that of fixed focal lengths.

Cat. No. 86 913

Close-up Accessories



Bellows unit with focusing stage

With rack-and-pinion and clamp screw, extension scale, 1/4" tripod socket and Rollei bayonet mount on either side; retains all automatic functions. Variable extension from 67 to 204 mm.

Cat. No. 98 065



Zoom extension tube 22 – 68 mm

Variable extension tube with precise helical focusing mount for extensions from 22 to 68 mm. Gives easy access to close-up photography without gaps or component changes. Primarily suited for use with Zeiss lenses from 40 to 250 mm. In conjunction with the reversing adapter, reproduction ratios far beyond 1:1 are possible. Only partly suitable for use with wide-aperture lenses.

Cat. No. 25 875



Reversing adapter

Extends the uses of your Rolleiflex in close-up photography. Allows reverse-mounting of lenses from 50 to 120mm focal length while retaining all automatic functions. Should preferably be used in conjunction with the bellows unit. With a reverse-mounted Planar 80 mm f/2.8, for example, reproductions ratios from 1.8:1 to 3.5:1 can be attained.

Cat. No. 98 410



Behind-the-lens shutter M39/M40

for Schneider M-Componon lenses 28 mm f/4 and 50 mm f/4. The shutter adapter has its own helical mount with an extension of 11 mm. This gives the Rolleiflex 6000 System access to photomicrography.

Cat. No. 59 926



Extension tubes

9, 17, 34, 67 mm long; retaining all automatic functions, can be used alone or in various combinations, also with bellows unit and reversing adapter. Rollei bayonet on either side.

Cat. No. 97 844 / 9 mm

Cat. No. 97 868 / 17 mm

Cat. No. 97 888 / 34 mm

Cat. No. 62 069 / 67 mm



Schneider Longar 1.4x HFT teleconverter

High-quality teleconverter extending the focal length of the basic lens by a factor of 1.4, specially matched with the wide-aperture Schneider lenses 80 mm f/2, 180 mm f/2.8 and 300 mm f/4. Also well-suited for all other telephoto lenses. The effective aperture decreases by only one f-stop, resulting in wide-aperture supertelephotos that are ideal for creative photography. The Tele-Xenar 180 mm f/2.8, for example, is converted to a high-speed 250mm telephoto f/4. The minimum focusing distance of the lenses remains unchanged so that teleconverters are also well-suited for close-ups. The 1.4x Longar should not be used in conjunction with the Planar 80 mm f/2.8, since the exit pupil of the Planar would damage the entrance pupil of the converter.

Cat. No. 59 670



Photos: Florian Adler
With 2x HFT Teleconverter.



2x Teleconverter HFT

Designed for use with any of the standard, telephoto and zoom lenses, this converter doubles the focal length of the basic lens. Initial apertures are reduced by two f-stops. The sophisticated optical design leaves the performance of the basic lens almost fully intact. The minimum focusing distance of the basic lens also remains unchanged.

Cat. No. 98 253



Rapid focusing lever

Clamps to focusing ring of PQ/PQS lenses of 40, 50, 60, 80, 120, 150 and 250mm focal length.

Cat. No. 98 029



Quick-release adapter

For quick and easy mounting of your camera on a tripod. The adapter may remain attached to the tripod.

Cat. No. 96 725



RC-120 Electronic remote release

40cm release cable with handset for remote control and mirror lock-up, also available with cable lengths of 5 and 10 m.

Cat. No. 98 874 (0.40 m)

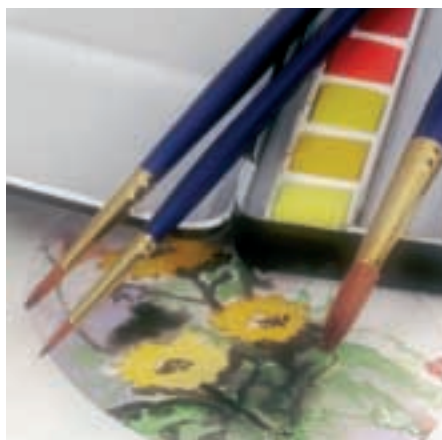
Cat. No. 97 983 (5.00 m)

Cat. No. 97 984 (10.00 m)

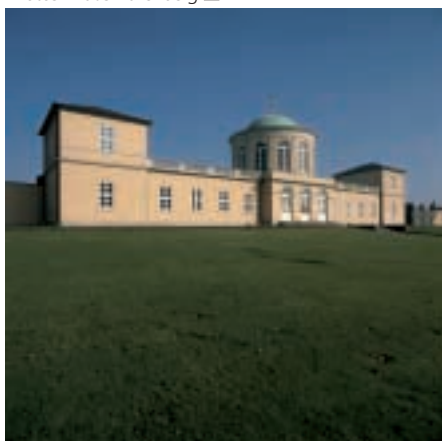
Filters and Lens Attachments



Photos: Klaus Harenberg Δ



Photos: Manfred Zimmermann ∇



Zeiss Softar I and II soft-focus lenses, size VI
Zeiss Softar lenses consist of a plano-parallel precision optical glass plate with tiny lenslets of different size on its surface. Contrary to most other soft-focus attachments and diffusers, Softar lenses do not give unsharp images. The picture retains important fine detail, and both overall contrast and color saturation remain unchanged. Small skin blemishes in portraits become less obvious. Softar lenses will give a subtle romantic touch to still lifes and scenic shots.

Cat. No. 96 900

Cat. No. 96 904



Sizes VI and M95x1 polarizing filters

This is one of the most important filters of all. It suppresses or reduces reflections on non-metallic surfaces and is particularly useful in landscape photography where it enhances and differentiates colors. It increases contrast, penetrates haze and UV radiation.

Cat. No. 96 841

Cat. No. 66 742



Size VI and M95x1 filters for color film

The **R 1.5 color conversion filter** reduces a bluish cast, blocks out degrading UV radiation and increases subject contrast. The **UV filter** improves color rendition and eliminates blur caused by UV light. Primarily used in high mountains and on the beach.

Cat. No. 96 803

Cat. No. 96 820

Cat. No. 66 739

Cat. No. 66 741



Gelatine-filter holder size VI and bayonet 104

Designed for 75x75mm (size VI) and 100x100mm (bayonet 104) gelatine filters.

Cat. No. 96 950 (size VI)

Cat. No. 98 233 (bayonet 104)



Size VI lens hoods

Two lens hoods for focal lengths from 80 – 250 mm and 50 as well as 60 mm. The hoods have an outside bayonet.

Cat. No. 96 752

Cat. No. 96 741

Custom lens hood

for Schneider 40 mm f/3.5 and Tele-Xenar 180mm f/2.8. The 40mm hood is slipped onto the outside diameter of the lens and secured with its clamp ring. The hood for the 180 mm f/2.8 lens has an outside bayonet of 104 mm dia. Filters may remain on the lens.

Cat. No. 60 472 (40/3.5)

Cat. No. 98 839 (180/2.8)

Custom lens hood

for Distagon 40 mm f/4 FLE taking 93mm-dia. drop-in filters.

Cat. No. 55 097

AGFA Profi-Workshop pk 02

Photo: Gerhard Vormwald



Size VI matte box

This practical accessory is designed like a bellows and effectively shades the lens against stray light. Its extension scale is engraved with the focal lengths 50 mm and 80 – 250 mm. Masks for 120mm and 250mm focal lengths are included. A rear drawslide accepts gelatine filters of 75x75mm size.

Cat. No. 98 080

Viewfinder Attachments



Magnifying hood

This consists of the Rollei 6x6 magnifier and a base frame for your Rolleiflex camera. The magnifier covers the entire frame of 6x6 slides, negatives or prints, but also mounted or unmounted 35mm slides. The 3x linear achromat is highly corrected and shows the entire object field in true color and with high brilliance. The interchangeable base frame allows the pictures to be viewed in either incident or transmitted light. The camera base frame converts the magnifier to a rigid magnifying hood.

Cat. No. 59 551 (magnifier)

Cat. No. 63 048 (base frame)



45° Prism finder

Replaces the standard folding viewfinder. The prism finder gives an unreversed and upright viewfinder image. It has four click stops at 90° intervals so that convenient viewing is possible even from awkward angles.

Cat. No. 97 814



90° Telescopic viewfinder

The telescopic viewfinder has an eyesight correction from +2 to -4 dp and can be set for various magnifications. Like the prism finder, it has four click stops at 90° intervals.

Cat. No. 62 903





High-D screen for outstanding viewfinder brightness and precise focusing

Super-bright focusing screen with micro-pattern surface for optimum control of depth of field and focus transition. Split-image rangefinder for maximum focusing accuracy with vertical lines, 4.5x6 frame marks for vertical and horizontal format. Standard focusing screen of 6001, 6008. This screen may also be used with Rolleiflex 2.8 FX, 4.0 FW and GX cameras.

Cat. No. 10 772



Bright focusing screen with split-image rangefinder and microprism collar

General-purpose focusing screen with split-image rangefinder, microprism collar and ground-glass area. The split-image rangefinder gives maximum focusing accuracy, while the focusing criterion of the microprism collar is a „non-shimmering image“. The micro-fine ground-glass screen allows sharpness to be checked over the entire frame.

Cat. No. 97 069



Ground-glass focusing screen

Fine-matte glass focusing screen for very precise focusing, above all in close-ups, at any aperture and high magnification. Specially suited for convenient composition when focusing aids might be found disturbing.

Cat. No. 97 054



Bright focusing screen

Focusing screen with micro-fine pattern for focus control over the entire frame and comfortable composition, also suitable for lenses with very small effective aperture and for judging depth of field. With orientation aids for vertical and horizontal 4.5x6 format.

Cat. No. 64 911



Bright microprism focusing screen

General-purpose focusing screen for rapid shooting, with microprism spot and ground-glass screen, for optimum focusing even in poor light. Focusing criterion: non-shimmering image. Vertical and horizontal 4.5x6 format outlines.

Cat. No. 97 074



AF High-D screen

Ultra-bright focusing screen with AF focusing areas, for optimum control of depth of field and focus transition. Brilliant viewfinder image even in poor light. Vertical and horizontal 4.5x6 format outlines.

Standard focusing screen of Rolleiflex 6008 AF.

Cat. No. 56 704

TTL Flash Adapter

Flash photography with the dedicated Rollei flash adapter

Using dedicated flash units in conjunction with the SCA-3562 Rollei Flash Adapter, you can take advantage of the TTL flash-metering feature of your camera.

To do this, switch the flash unit to TTL metering. A sensor in your camera will meter the light reflected from the film surface during actual exposure and control flash duration as a function of film speed and ambient light. The result is very precise exposure within an ISO range of 25 – 1600.

The SCA-3562 adapter allows the following values to be exchanged between flash unit and Rolleiflex 6008 AF:

- ◆ Focal-length setting of AF lenses to control the flash reflector
- ◆ Lens aperture and film-speed setting to control the autoflash exposure mode of the flash unit
- ◆ The flash-output compensation set on suitable flash units
- ◆ Control of AF preflash.

With the dedicated Rollei SCA-3562 Flash Adapter and a Rolleiflex 6008 AF, the following flash modes are possible:

- ◆ Programmed AE flash
- ◆ Aperture-priority AE flash
- ◆ Shutter-priority AE flash
- ◆ Fill-in autoflash (compensating and additive)
- ◆ Flash bracketing.



AGFA Profi-Workshop pk 02



Rollei SCA-356 Flash Adapter

The Rollei SCA-356 Flash Adapter allows dedicated flash photography with all dedicated flash units offering the SCA-300 System. Simply slip the flash unit with its SCA adapter into the accessory shoe of the camera, and optimum flash exposure is guaranteed.

Cat. No. 97 661



Rollei SCA-3562 Flash Adapter

The Rollei SCA-3562 Flash Adapter converts the Rolleiflex 6008 AF for dedicated flash photography with any compact or handle-mount flash unit of the SCA-3000 System. The corresponding flash units are connected to the adapter simply by slipping them on or with the aid of a cable.

Cat. No. 98 290



Photo: Florian Adler

Technique:

Background: Convex reflecting sheet; in front, colorful decorative mini-lights and colored neon light.

First-curtain sync, camera and neon light moved slightly during exposure.

Exposure time 1/2 s.

Interchangeable Magazines



Interchangeable 6x6/120 or 6x6/220 magazine

With film-speed indication in one-third increments from ISO 25/15° to 6400/39° and automatic frame counter. Particularly fast and convenient work flow due to external preloading of film inserts. The integral laminar drawslide guarantees safe and rapid magazine and thus film change without loss of pictures.

Cat. No. 88 798 (6x6/120)

Cat. No. 88 799 (6x6/220)



Rollei type 4560 magazine

Small and light-weight 4.5x6 magazine. Fitted to the camera via an adapter frame; easily reset for vertical or horizontal format. Viewfinder eyepiece and camera position remain unchanged. Separate motor for film advance and winding (power supplied by NiCd battery of camera).



With integral laminar drawslide, preloadable film insert, input of film speed and type (120 or 220), multiple exposures. LC display of ASA/DIN setting and frame number. With 4.5x6 viewfinder mask (vertical/horizontal).

Cat. No. 14 987 (magazine)

Cat. No. 10 776 (adapter frame)



Instant-film magazine with film-speed input and drawslide

For 8 or 10 size 6x6 exposures on instant 8.5x10.8cm film pack. The magazine can be used with any of the interchangeable viewfinders.

Cat. No. 97 979



Film insert

Externally preloadable, in plastic case. Case separately available. For extremely rapid film change.

Cat. No. 98 004



Type 4560 film insert

Preloadable, symmetrical film insert for type 4560 magazine. Guarantees rapid film change without time-consuming replacement of film spool.

Cat. No. 14 986

Professional Power Supply



If there is no wall outlet around, the charger may be connected to a 12V car battery via an optional cable.

The Rolleiflex PowerInterface offers even more power-supply options. It is the same size as the Nicad battery and can be inserted in the battery compartment instead of the latter. A choice of different power sources can then be connected to it, which opens up new possibilities for the stationary or mobile use of the camera. These are, for example, the standard charger, the 12V Rolleiflex power-supply adapter, the Rolleiflex battery box for lithium batteries, the Einhell Mobile Energy Station or the car's cigarette-lighter socket.

The PowerInterface requires 12 – 18 VDC of at least 200 mA.

The dedicated power supply is tailored to the needs of its users. The camera's electronics and motors are supplied with power by a rechargeable sintered high-performance Nicad battery. The benefits of this professional solution are high shooting capacity, easy handling and safe operation even at low temperatures.

At standard room temperature, the energy of the dedicated battery is good for about 200 shots. When only about 20 exposures remain, a warning will light up in the camera viewfinder. Below a minimum charge, all camera functions will be disabled. Interchangeable batteries will see you through even extensive shoots.

Sufficient power is assured even at very low temperatures. Just carry the battery on your body or in your bag and connect it to the camera via an external battery adapter. Rolleiflex 6000 cameras come with a rapid charger with automatic charge limiter. It takes about one hour to recharge the battery outside the camera. The charger will then switch back from rapid to normal charging. In a hurry, you may stop charging after only 15 minutes. The battery will then provide sufficient energy for about 50 shots.



10V Nicad battery

Dedicated rapid-changing battery with overload protection and spare-fuse compartment; e.g. for extended shoots.

Cat. No. 39 715



External battery adapter

Separates the power-supply holder from the camera and ensures reliable power supply even at very low temperatures because it can be carried close to your body. Consists of connecting cable with terminals for the battery holder and the corresponding slot in the camera.

Cat. No. 98 200



Rapid charger

100 – 240 V, 50/60 Hz, with automatic rapid-charging stop. Indicators for rapid and normal charging. Rapid charging up to about one hour. 12V terminal for car battery and 3.5mm jack 12V/500 mA. Power-supply cable.

Cat. No. 64 899

Professional Power Supply



Battery box

Rollei battery box with cable for 5x type DL 123 A 3V-lithium batteries as power source of Rollei PowerInterface. Should always be in your bag – just in case. Capacity about 30 – 40 films (6x6/120) in normal ambient temperature (~ + 20 to + 21°C).

Cat. No. 30 036



PowerInterface

Same size as the Nicad battery. Permits connection of different power sources, thus facilitating the stationary and mobile use of the camera.

Cat. No. 30 017



12V Power-supply adapter

Power-supply unit for System 6000 cameras in conjunction with Rollei PowerInterface. Ideal for stationary use of dedicated cameras.

Cat. No. 30 019



Car-battery cable

For running rapid charger on 12V car battery while the vehicle is in motion (12-hour charging cycle), with plug for cigarette lighter of car.

Cat. No. 91 187

Focal-length Comparison

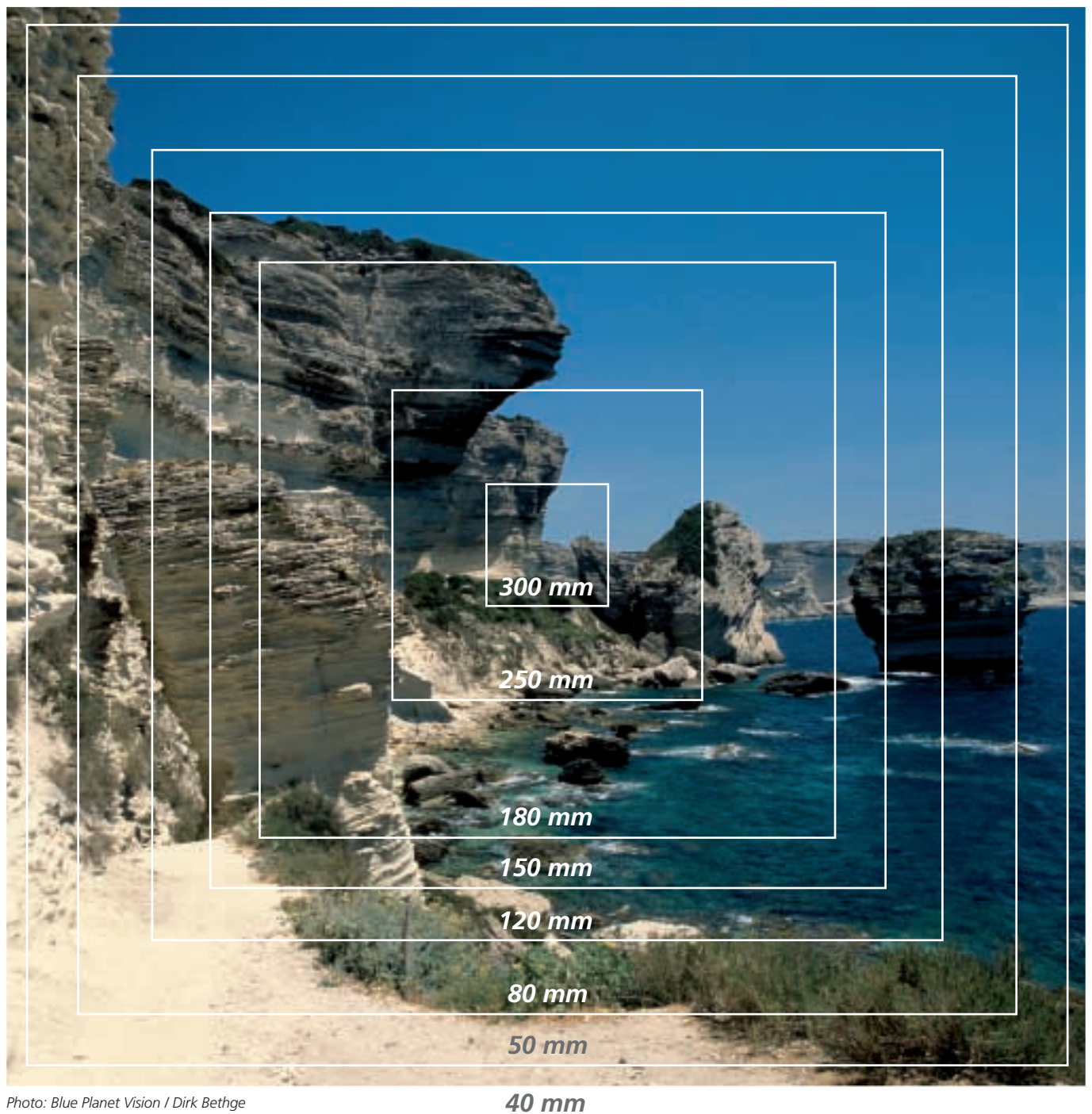


Photo: Blue Planet Vision / Dirk Bethge

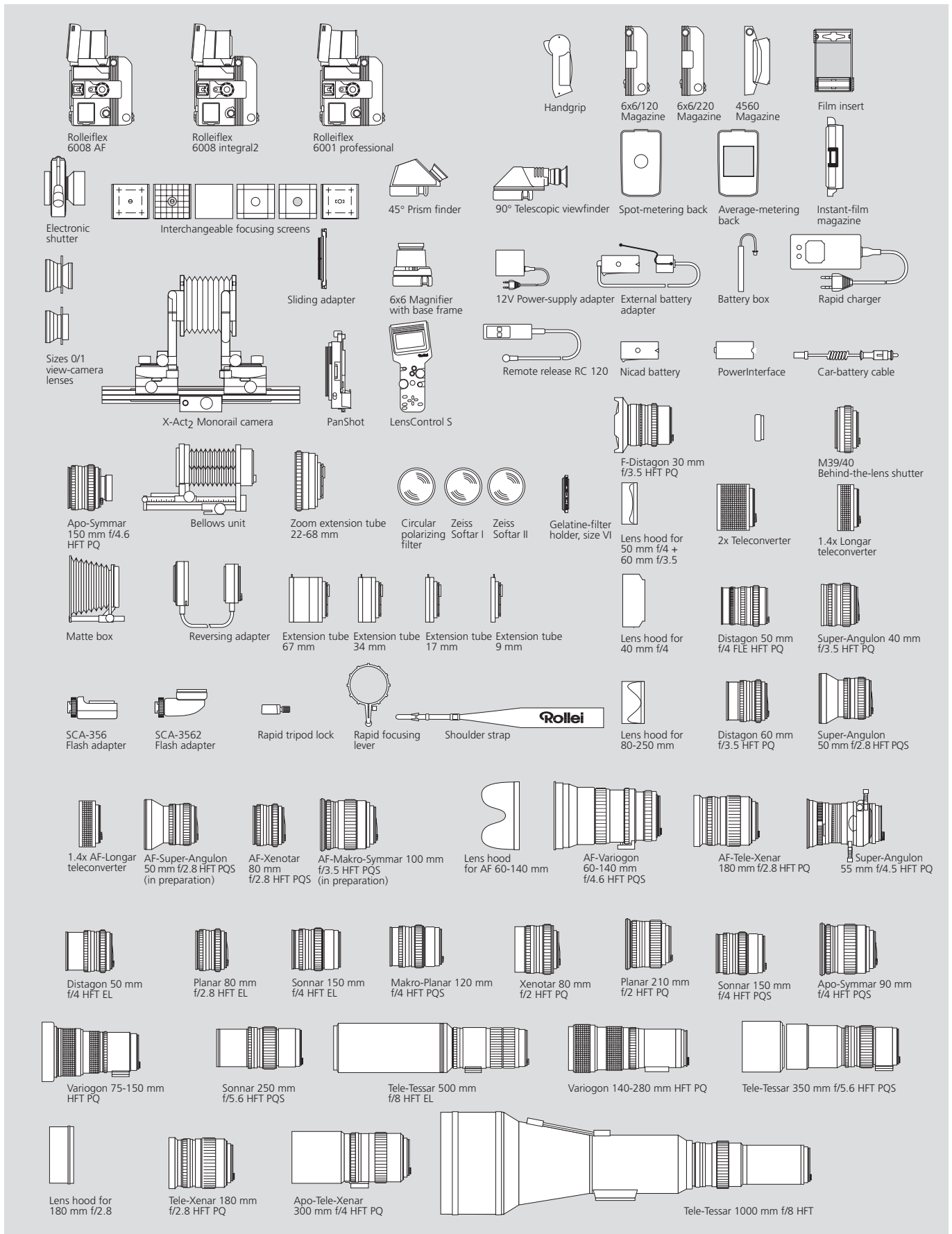
40 mm

System-6000 Lens Table

		Aperture range f/	Shutter speeds 30 s to	Angular field diagonal/ horizontal	Elements/ components	Focusing range m/ft	Max. diameter mm/inch	Max. length mm/inch	Weight g/oz	Filter size
F-Distagon 30mm f/3.5 (fisheye)	PQ	3.5 – 22	1/500	180/112°	8 / 7	∞ – 0.3 m ∞ – 0.984 ft	108 mm 4.252 in	122 mm 4.803 in	1550 g 54.675 oz	built-in M 24 x 0.5
Super-Angulon 40mm f/3.5 (with floating elements)	PQ	3.5 – 22	1/500	88/68°	8 / 8	∞ – 0.4 m ∞ – 1.312 ft	83.2 mm 3.276 in	72 mm 2.835 in	750 g 26.455 oz	M 77 x 0.75
Distagon 50mm f/4 (with floating elements)	PQ	4 – 32	1/500	75/57°	9 / 8	∞ – 0.5 m ∞ – 1.640 ft	82 mm 3.228 in	95 mm 3.740 in	880 g 31.041 oz	Rollei size VI bayonet
Distagon 50mm f/4	EL	4 – 32	1/500	75/57°	7 / 7	∞ – 0.5 m ∞ – 1.640 ft	81.5 mm 3.209 in	96 mm 3.780 in	840 g 29.630 oz	M 67 (inside) VI (outside)
AF-Super-Angulon 50mm f/2.8**	PQS	2.8 – 22	1/1000	74/56°	9 / 8	∞ – 0.6 m ∞ – 1.969 ft	104 mm 4.094 in	115 mm 4.528 in	1500 g 52.911 oz	M 95 x 1
Super-Angulon 50mm f/2.8	PQS	2.8 – 22	1/1000	74/56°	9 / 8	∞ – 0.6 m ∞ – 1.969 ft	104 mm 4.094 in	115 mm 4.528 in	1600 g 56.438 oz	M 95 x 1
Distagon 60mm f/3.5	PQ	3.5 – 22	1/500	67/49°	7 / 7	∞ – 0.6 m ∞ – 1.969 ft	81 mm 3.189 in	83 mm 3.268 in	770 g 27.161 oz	Rollei size VI bayonet
Planar 80mm f/2.8	PQS	2.8 – 22	1/1000	52/38°	7 / 5	∞ – 0.9 m ∞ – 2.953 ft	81.5 mm 3.209 in	63 mm 2.480 in	590 g 20.812 oz	Rollei size VI bayonet
Planar 80mm f/2.8	EL	2.8 – 22	1/500	52/38°	7 / 5	∞ – 0.9 m ∞ – 2.953 ft	81.5 mm 3.209 in	63 mm 2.480 in	590 g 20.812 oz	M 67 (inside) VI (outside)
Xenotar 80mm f/2	PQ	2 – 16	1/500	52/38°	7 / 5	∞ – 0.8 m ∞ – 2.625 ft	97.3 mm 3.831 in	100 mm 3.937 in	960 g 33.863 oz	Rollei size VI bayonet
AF-Xenotar 80mm f/2.8*	PQS	2.8 – 22	1/1000	52/38°	7 / 6	∞ – 1.0 m ∞ – 3.281 ft	84.5 mm 3.327 in	66.5 mm 2.618 in	520 g 18.342 oz	Rollei size VI bayonet
Apo-Symmar 90mm f/4 Makro	PQS	4 – 32	1/1000	47/34°	6 / 4	∞ – 0.4 m ∞ – 1.312 ft	104 mm 4.094 in	110 mm 4.331 in	860 g 30.336 oz	M 95 x 1
AF-Makro-Symmar 100mm f/3.5**	PQS	3.5 – 32	1/1000	43/32°	8 / 7	∞ – 0.45 m ∞ – 1.476 ft	82 mm 3.228 in	110 mm 4.331 in	900 g 31.747 oz	Rollei size bayonet VI
Planar 110mm f/2	PQ	2 – 16	1/500	39/28°	7 / 6	∞ – 0.8 m ∞ – 2.625 ft	104 mm 4.094 in	95 mm 3.740 in	1295 g 45.680 oz	M 95 x 1(filter) bay. 104 (lens hood)
Makro-Planar 120mm f/4	PQS	4 – 32	1/1000	36/26°	6 / 4	∞ – 0.8 m ∞ – 2.625 ft	81.5 mm 3.209 in	102 mm 4.016 in	960 g 33.863 oz	Rollei size VI bayonet
Apo-Symmar 150mm f/4.6 Makro	PQ	4.6 – 32	1/500	29/21°	6 / 4	∞ – 1:1.1	81.5 mm 3.209 in	81.5 mm 3.209 in	706 g 24.903 oz	Rollei size VI bayonet
Sonnar 150mm f/4	PQS	4 – 32	1/1000	29/21°	5 / 3	∞ – 1.4 m ∞ – 4.593 ft	81.5 mm 3.209 in	102 mm 4.016 in	890 g 31.394 oz	Rollei size VI bayonet
Sonnar 150mm f/4	EL	4 – 32	1/500	29/21°	5 / 3	∞ – 1.4 m ∞ – 4.593 ft	81.5 mm 3.209 in	102 mm 4.016 in	890 g 31.394 oz	M 67 (inside) VI (outside)
Tele-Xenar 180mm f/2.8	PQ	2.8 – 22	1/500	26/18°	6 / 6	∞ – 1.8 m ∞ – 5.906 ft	100 mm 3.937 in	150 mm 5.906 in	1525 g 53.793 oz	M 95 x 1 (filter) bay. 104 (lens hood)
AF-Tele-Xenar 180mm f/2.8*	PQ	2.8 – 22	1/500	26/18°	7 / 7	∞ – 1.8 m ∞ – 5.906 ft	100 mm 3.937 in	150 mm 5.315 in	1525 g 52.205 oz	M 95 x 1 (filter) bay. 104 (lens hood)
Sonnar 250mm f/5.6	PQS	5.6 – 45	1/1000	18/13°	4 / 3	∞ – 2.5 m ∞ – 8.202 ft	82.5 mm 3.248 in	170 mm 6.693 in	1150 g 40.565 oz	Rollei size VI bayonet
Sonnar 250mm f/5.6	EL	5.6 – 45	1/500	18/13°	4 / 3	∞ – 2.5 m ∞ – 8.202 ft	82.5 mm 3.248 in	170 mm 6.693 in	1150 g 40.565 oz	M 67 (inside) VI (outside)
Apo-Tele-Xenar 300mm f/4	PQ	4 – 32	1/500	15/11°	6 / 6	∞ – 3.2 m ∞ – 10.499 ft	101 mm 3.976 in	262 mm 10.315 in	2000 g 70.548 oz	M 95 x 1
Tele-Tessar 350mm f/5.6	PQS	5.6 – 45	1/1000	13/9°	4 / 4	∞ – 5 m ∞ – 16.404 ft	90 mm 3.543 in	227 mm 8.937 in	1650 g 58.202 oz	M 86 x 1
Tele-Tessar 500mm f/8	EL	8 – 64	1/500	9/6°	5 / 3	∞ – 8.5 m ∞ – 27.887 ft	100 mm 3.937 in	316 mm 12.441 in	1995 g 70.372 oz	M 86 x 1
Tele-Tessar 1000mm f/8	PQ	8 – 64	1/500	4.5/3°	4 / 4	∞ – 21 m ∞ – 68.898 ft	215 mm 8.465 in	790 mm 31.102 in	8740 g 308.294 oz	–
PCS-Super-Angulon 55mm f/4.5	PQ	4.5 – 32	1/500	70/85°	10 / 8	∞ – 0.5 m ∞ – 1.640 ft	104 mm 4.094 in	155 mm 6.102 in	1650 g 58.202 oz	Rollei size bayonet 104 dia.
AF-Variogon 60 – 140mm f/4.6*	PQS	4.6 – 32	1/1000	67/50° 32/23°	13 / 11	∞ – 0.7 m ∞ – 2.297 ft	119 mm 4.685 in	210 mm 8.268 in	2400 g 84.658 oz	M 122 x 1 filter adapter
Variogon 140 – 280mm f/5.6	PQ	5.6 – 45	1/500	32/23° 16/11°	17 / 14	∞ – 2.5 m ∞ – 8.202 ft Makro	94 mm 3.701 in	238 mm 9.370 in	1750 g 61.729 oz	M 95 x1/ 93 mm drop-in-filter

*Only Rolleiflex 6008 AF **Only Rolleiflex 6008 AF – in preparation

System Chart



Rollei

Rollei Fototechnik GmbH · Salzdahlumer Straße 196 · D-38126 Braunschweig
www.rollei.de · Certified to DIN EN ISO 9001